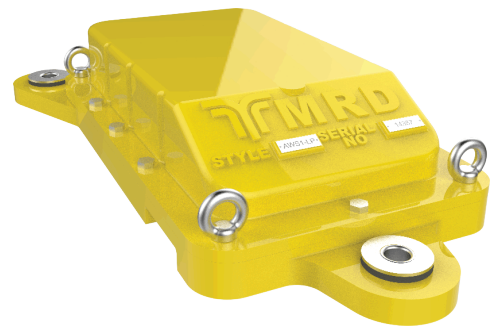


LP AWS

The equipment in the track consists of a protective ramp preceding a Permanent Inductor (AWS3) and an Electro Inductor (AWS1). The Permanent Inductor has its North Pole uppermost and this magnetic field by itself gives a "caution" indication to the driver. The Electro Inductor (AWS1), when energised, has its South Pole uppermost and this South Pole following the North Pole of the permanent inductor gives a "Clear" indication to the driver.

On bi-directional lines, special permanent inductors called Suppressor Inductors (AWS2) may be used to prevent a train receiving AWS indications at a signal for the opposite direction to which the train is travelling. These inductors have a permanent inductor and, in addition, a suppressing coil which, when energised, diverts the magnetic flux, suppressing any indication to the train.



Safety in All Conditions

The Automatic Warning System (AWS) is provided primarily to aid drivers in observing the fixed signals, particularly under adverse weather conditions. Used in conjunction with the on-board MagSense unit, the AWS helps to provide drivers with a secondary audible alert to confirm their primary visual observations of the fixed signals.

Features

- Low profile design suitable for installation on Slab Track/Sleepers
- High strength enclosure machined from solid aluminium block
- Replaceable vibration mounts
- UV stable cable sheath
- Watertight
- Water-proof sealant
- Powder coated
- Corrosion protected

Benefits

- No ballast removal required
- No post-production modifications required
- Low maintenance costs



LP AWS

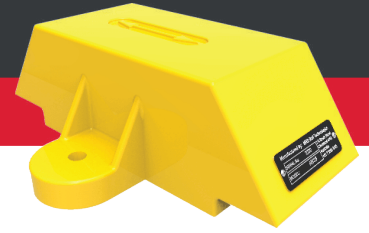
Automatic Warning System

MRD Rail Technologies Pty Ltd

+61 7 3821 5151

sales@mrd.com.au

www.mrd.com.au



Part Numbers

Low Profile Electro Inductor	AWS1-LP
Low Profile Suppressor Inductor	AWS2-LP
Permanent Magnet	AWS3

Technical Specifications

Operating Values

AWS1 Electro Inductor

Nominal Coil Resistance	27Ω ± 10% @ 26°C
Nominal DC Current	888mA ± 10%
Nominal Volts	24V DC
Minimum Volts	22V DC
Maximum Volts	28V DC

AWS2 Suppressor Inductor

Nominal Coil Resistance	17Ω ± 10% @ 26°C
Nominal DC Current	1410mA ± 10%
Nominal Volts	24V DC
Minimum Volts	22V DC
Maximum Volts	28V DC

Approvals & Compliances

LP AWS Type 1/2

Queensland Rail Doc No. C0125

AWS Type 3

PTS SA Doc No. PTS-009

GENERAL DATA

LP AWS Type 1 Dimensions (H x W x D)	132 × 445 x 768mm
LP AWS Type 1 Weight	43kg
LP AWS Type 2 Dimensions (H x W x D)	132 × 445 x 768mm
LP AWS Type 2 Weight	53kg
LP AWS Type 3 Dimensions (H x W x D)	106 × 273 × 328mm
LP AWS Type 3 Weight	20kg