



Introducing

THE FUTURE OF CONDITION MONITORING



TrackSense

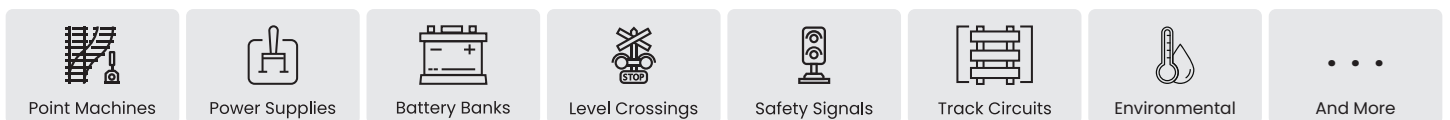
Powered by MRD Rail Technologies



TrackSense represents the next generation of remote condition monitoring, combining modular expansion units with industry-standard sensors and a powerful cloud server for seamless data storage and analysis. Designed for affordability and reliability, TrackSense offers a practical solution for asset maintenance management you can depend on.

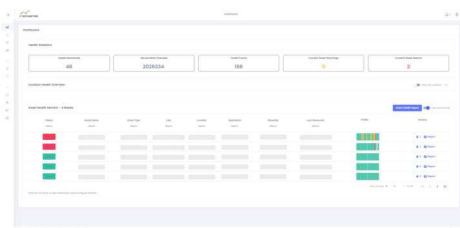
TrackSense Modular Hardware

TrackSense is designed with your organisation in mind. Unlike expensive, rigid systems, it offers an affordable, modular solution compatible with off-the-shelf sensors, letting you choose the tools that best meet your needs. The DIN-mounted backbone design allows easy, cost-effective expansion, upgrades, and module replacement, future-proofing your investment. TrackSense provides lasting value and support long after purchase. It can monitor key performance data for any rail asset, including:



TrackSense Cloud Platform

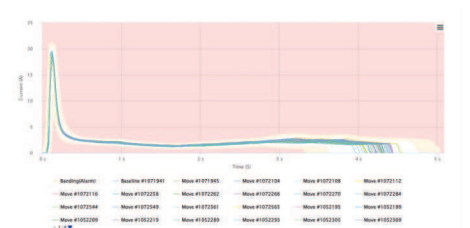
TrackSense enables real-time monitoring and predictive analysis of your network's assets from anywhere, offering flexible options for cloud or local processing and protection of your data with encryption and user credentials. You can streamline your workflow by integrating alerts into your existing maintenance platform, and daily email reports provide a comprehensive overview of your entire system, ensuring you always stay informed and in control.



TrackSense Cloud gives you oversight of your system's health/performance from anywhere



Asset trend view for predictive alerts and monitoring gradual performance degradation



View and compare individual movement's signatures for analytics, alerts and fault finding



The Future Of Condition Monitoring

Logger Module (TS-LOG)

The Logger Module is the core of TrackSense: it gathers data from connected expansion modules, buffers it on-board during power or network drops, and securely syncs the data with the TrackSense Cloud.

General Data

Dimensions (W x H x D)	22.5 × 107 × 95mm
Weight	0.25kg
Operating Temperature	-25 to 70°C
Supply Voltage	24V DC
Supply Current	80mA
Storage	16GB SD Card
Ethernet	RJ-45, 10 Mbit/s or 100 Mbit/s
RS-485	MODBUS RTU



Analog Module (TS-ANA)

The Analog Module expands the TrackSense system, adding six 4-20mA analog sensor inputs per module.

General Data

Dimensions (W x H x D)	22.5 × 107 × 95mm
Weight	0.25kg
Operating Temperature	-25 to 70°C
Supply Voltage	24V DC
Supply Current	40mA + 50mA per Channel



Digital Module (TS-DIG)

The Digital Module expands the TrackSense system, adding twelve digital inputs per module.

General Data

Dimensions (W x H x D)	22.5 × 107 × 95mm
Weight	0.25kg
Operating Temperature	-25 to 70°C
Supply Voltage	24V DC
Supply Current	100mA



Earth Leakage Detector Module (TS-ELD)

The Earth Insulation Monitor Module expands the TrackSense system, allowing it to monitor the insulation between your floating IT system and earth.

General Data

Dimensions (W x H x D)	22.5 × 107 x 95mm
Weight	0.25kg
Operating Temperature	-25 to 70°C
Earth Leakage Detection	0-999KΩ
Busbar Isolation	2kV
Busbar Rated Voltage	650V AC/DC

